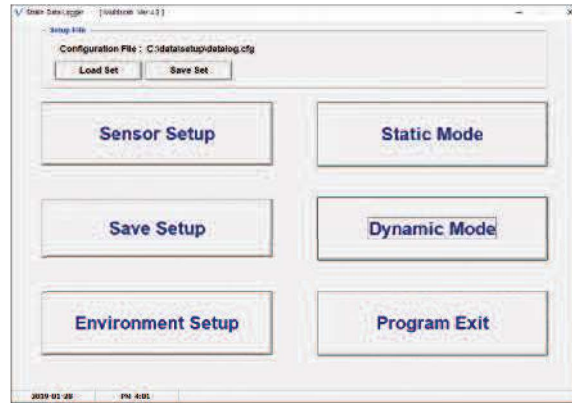


Data Logger Software for GTDL Series

Multiscan program is a dedicated software connecting PC and data logger via USB communications. Multiload program is a data analyzing software. Without additional devices, real-time measurement is available with only USB cable connection. Also, it is convenient and available for data logger setting and simultaneous 128-channel measurement.



Multiscan & Multiload

Easy system and channel configuration
multipoint data logger
USB 2.0

Specification

Model	Multiscan & Multiload
Channel	128 Channel simultaneous monitoring
Interface	USB
Display	Text, TimeGraph, X-Y Graph, Spread Sheet, Numeric LED
Graph	Realtime Time Plot 32 channel Realtime X-Y Plot 4 channel AutoScale & Manual Scale, Zoom Selecting the graph by the sensor type (strain, load, displacement, pressure, temperature, acce., volt)
Analysis	FFT, Average, Min, Max, P-P, digital filtering, N point average
Save Format	CSV text file
Save Method	Supporting 5 steps of saving files, Supporting dividing files (time, date, counting)
Print	Graph & TEXT Print, Clipboard Copy
OS	Windows 98 이상, 32Bit & 64Bit Support USB 2.0 Intel Core Duo 2Ghz, 1G RAM 이상
Support	All GTDL-Series Data Logger

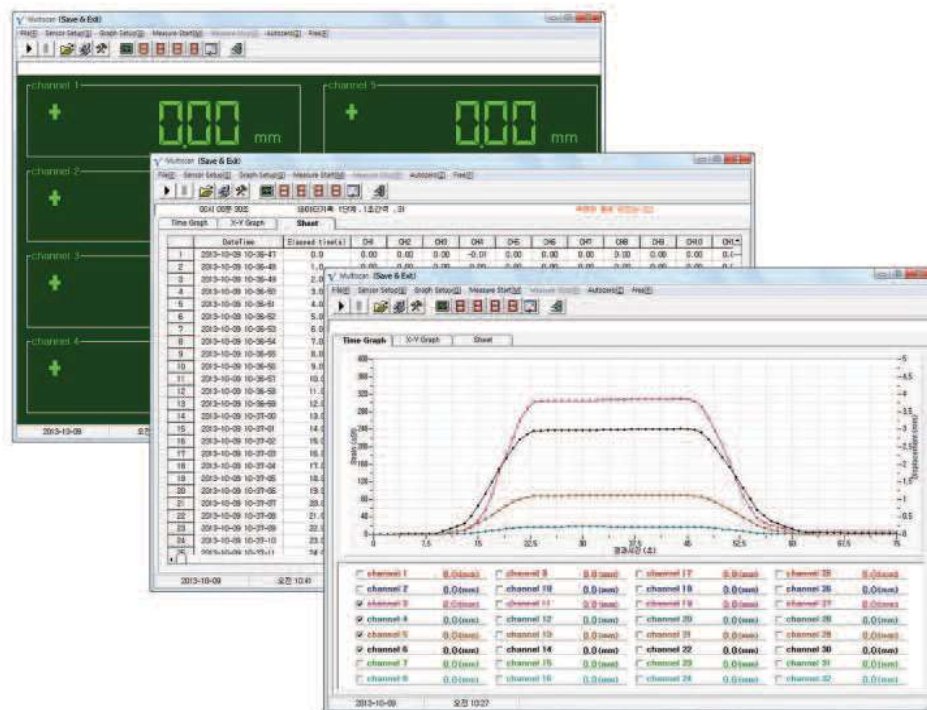
sensor setting

Channel Setup

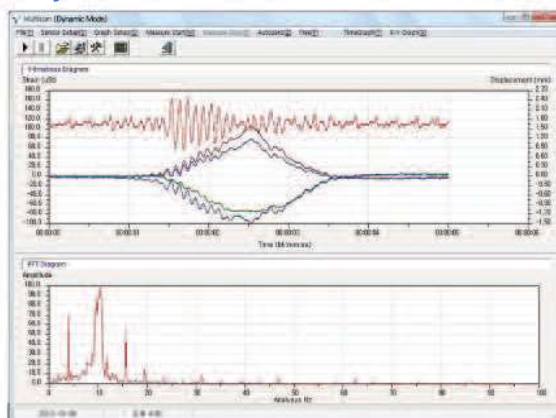
Chan	Information	Status	Sensor type	Dec.point	Unit	Mode	Capacity	R.O (mv/v)	G.F	Graph Axis	L.P.Filter	Att.A	Adj.B
01	channel 1	ON	4Gage (Sensor)	000.00	kN	Measure	50	2		Load	10Hz	1	0
02	channel 2	ON	4Gage (Sensor)	000.00	kN	Measure	50	2		Load	10Hz	1	0
03	channel 3	ON	4Gage (Sensor)	000.00	kN	Measure	50	2		Load	10Hz	1	0
04	channel 4	ON	4Gage (Sensor)	000.00	kN	Measure	50	2		Load	10Hz	1	0
05	channel 5	ON	4Gage (Sensor)	000.00	kN	Measure	50	2		Load	10Hz	1	0
06	Strain 1	ON	1Gage 120Ω	00000	uSt	Measure			2	Strain	10Hz	1	0
07	Strain 2	ON	1Gage 120Ω	00000	uSt	Measure			2	Strain	10Hz	1	0
08	Strain 3	ON	1Gage 120Ω	00000	uSt	Measure			2	Strain	10Hz	1	0
09	Strain 4	ON	1Gage 120Ω	00000	uSt	Measure			2	Strain	10Hz	1	0
10	Strain 5	ON	1Gage 120Ω	00000	uSt	Measure			2	Strain	10Hz	1	0
11	DISP 1	ON	4Gage (Sensor)	000.00	mm	Measure	50	5		Displacement	10Hz	1	0
12	DISP 2	ON	4Gage (Sensor)	000.00	mm	Measure	50	5		Displacement	10Hz	1	0
13	DISP 3	ON	4Gage (Sensor)	000.00	mm	Measure	50	5		Displacement	10Hz	1	0
14	DISP 4	ON	4Gage (Sensor)	00.000	mm	Measure	10	5		Displacement	10Hz	1	0
15	DISP 5	ON	4Gage (Sensor)	00.000	mm	Measure	5	5		Displacement	10Hz	1	0
16	TEMP	ON	Pt 100	0000.0	°C	Measure				Temperature	10Hz	1	0

Buttons: Group Set, Graph Channel Select, Save & Exit

Static mode test



Dynamic mode test



Cycle mode test

