

Federal Scientech DAQ System

惠達科技 多功能資料擷取系統

Federal Scientech DAQ System

電壓設定
Voltage Setting (F1)

應變規設定
Strain Gage Setting (F2)

計算頻道設定
Virtual Channel Setting

測試
Start Testing (F3)

資料轉換
Reduce Data (F4)

重新搜尋裝置
Reset Device

離開
Quit Software (ESC)

FSC HIGH SPEED STRAIN DAS-32

SLOT 1 SLOT 2 SLOT 3 SLOT 4

Slot1 Voltage
Slot2 120 Ω Quarter Bridge(10kHz)
Slot3 120 Ω Quarter Bridge(10kHz)
Slot4 Full Bridge(50kHz)

惠達科技
www.fedtec.com.tw

TEL:02-2702-5886 FAX:02-2702-6683 Design by FSC (Version 2018)

Hardware Specialty

- **Resolution:**
 - Voltage 16 bits
 - Strain Gage 24 bits (Accuracy 0.02% Cal Type 25°C)
- **Sampling Rate**
 - Voltage 10~100 kHz
 - Strain Gage 10~10 kHz (Standard)
10~50kHz (High Speed Option)
- **Sampling Method**
 - Simultaneous Sampling
- **Voltage Type**
 - 10 ~ 10 VDC
- **Strain Gage Type**
 - 120Ω Quarter Bridge
 - 350Ω Quarter Bridge
 - Half / Full Bridge (Only for High Speed Option)
- **Channel Number**
 - Up to 64 Channels

System Requirement

- CPU: Core i3 以上
- RAM: 4 GB
- OS: Windows 7 以上
- Interface: USB2.0

Software Description

參數設定

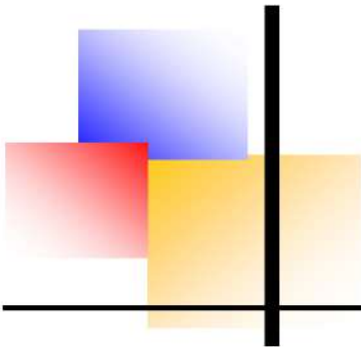
- 可依不同模組設定 Sampling Rate
- 自行定義通道名稱&單位
- 支援多種校正曲線
- 建立 Strain Gage 資料庫

量測及儲存

- 所有通道同步量測
- 選擇自動歸零通道
- 連續記錄及自動更新檔名存檔
- 支援 Mohr's circle 計算,最大&小主應力

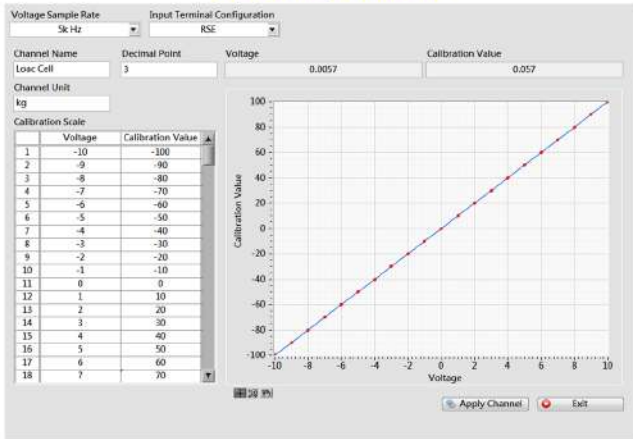
資料讀取

- 轉檔輸出 Text 及 BMP 檔
- 建立簡易 Word 報告
- 開啟區段資料
- 縮放圖檔資料
- 進行事後計算分析

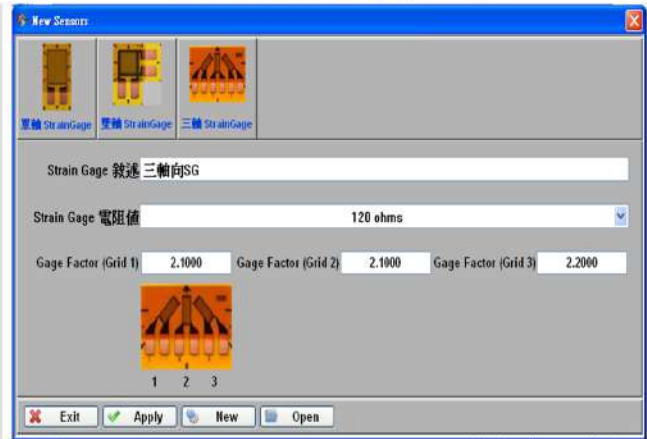


軟體畫面

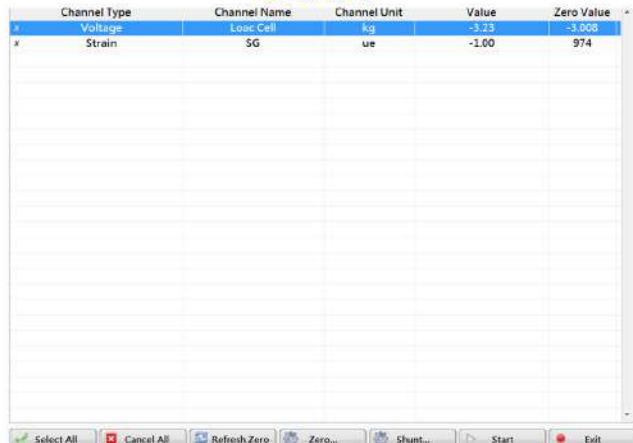
電壓頻道多點校正



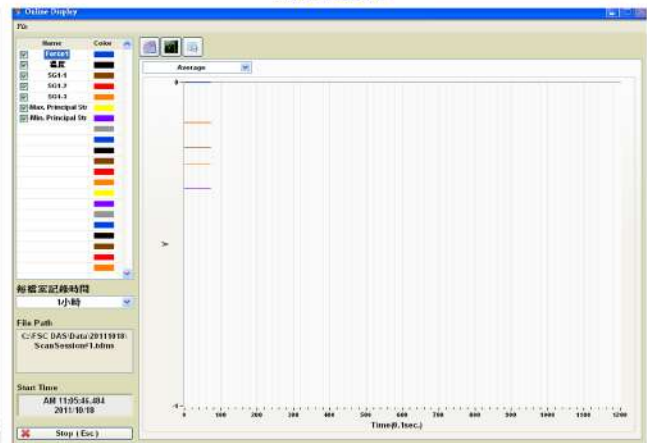
建立 Strain Gage 資料庫



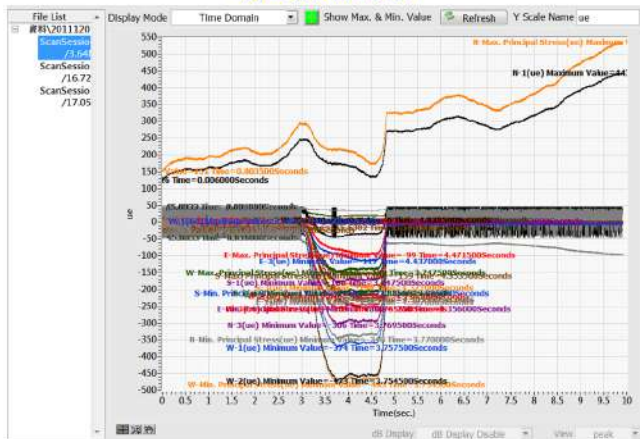
自動歸零



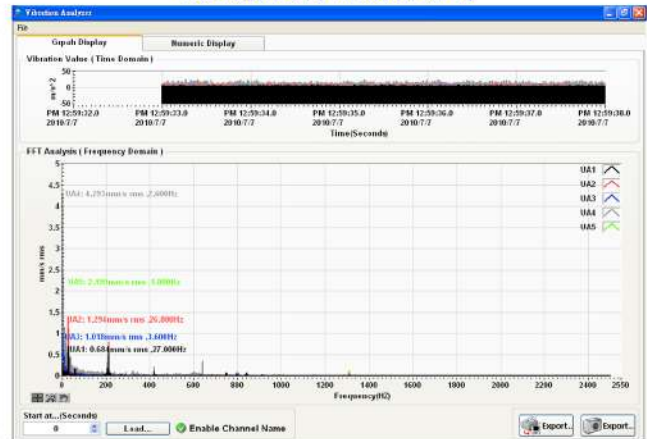
測試畫面



測試資料轉檔



測試資料轉檔頻譜分析



另有客製化軟體, 歡迎來電詢問